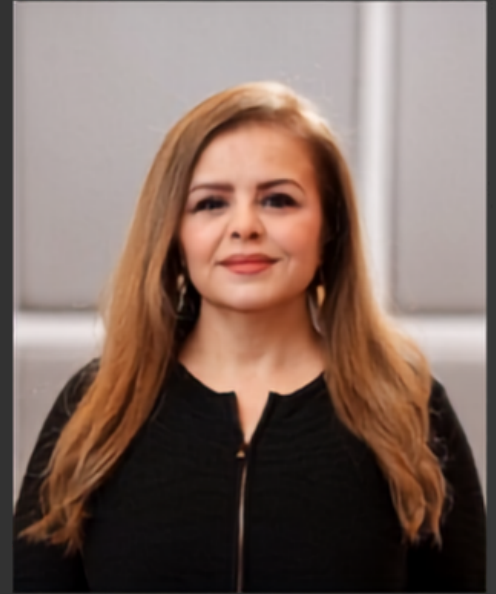


MEET YOUR CANDIDATE

Amal Abdallah

Partner & Country Manager · Saba IP
 IP Expert · IFC-Certified Board Director
 30 years across MENA, EU & WIPO

LLWB BOARD CANDIDATE 2026



— PROFESSIONAL PROFILE

30 Years of IP Leadership Across Borders

A highly accomplished Intellectual Property Expert and Strategic Consultant with a proven track record as Partner and Country Manager at Saba IP. Specializes in bridging legal protection with business expansion for startups, SMEs, and international brand owners across the MENA region, EU, and WIPO jurisdictions.

- IP Strategy
- Legislative Reform
- Ecosystem Development
- Corporate Governance
- Brand Protection
- WIPO

— VISION FOR LLWB

Empowering Women Through Innovation & Governance

- **IP Education Clinics** — hands-on coaching to help female founders protect intangible assets and navigate early-stage pitfalls
- **Youth Innovation** — engaging young girls in early innovation, sparking entrepreneurial mindsets from the ground up
- **Board Diversity** — advocating for women on corporate boards to bridge the executive gender gap
- **Structured Mentorship** — building confidence, skills, and purpose in women leaders across all stages

"I am eager to channel 30 years of IP expertise into LLWB's core pillars — fortifying the League as an engine of resilience and sustainable economic growth."

MEET YOUR CANDIDATE

Abir Chebaro

Senior Gender Advisor

- IFC Certified Corporate Director (CPD)
- LLWB Vice President | Advocacy & Women on Boards
- ILO Certified Participatory Gender Audit Facilitator



LLWB BOARD CANDIDATE 2026

PROFESSIONAL PROFILE

Advancing Equality, Empowering Women, Building Stronger Communities

A gender equality and women's economic empowerment expert with 20+ years of experience leading policy, advocacy, and institutional development initiatives in Lebanon and the region.

Abir has held senior advisory positions in government, including Advisor to the Prime Minister on Women's Affairs, Vice President of the National Commission for Lebanese Women, and Advisor to the Minister of State for Women's Affairs, where she contributed to advancing key reforms and national strategies.

Her work spans government, international organizations, academia, civil society, and the private sector, with a focus on women's leadership, economic empowerment, and inclusive governance.

A member of LLWB since 2019, Abir currently serves as Vice President, leading the Advocacy and Women on Boards pillar.

During her tenure, she led LLWB's flagship Women on Boards initiative, expanded strategic partnerships and networks, and contributed to growing the project.

- Strategic Leadership & Institutional Development
- Corporate Governance
- Partnerships & Resource Mobilization
- Advocacy & Policy Influence
- Women's Economic Empowerment
- Cross-Sector Collaboration
- Leadership Development
- Gender Equality & Inclusive Governance

VISION FOR LLWB

Building on Our Legacy. Investing in Our Greatest Asset: Our Members.

- Our Members, Our Greatest Asset — creating greater opportunities for engagement, mentorship, leadership development, knowledge exchange, and meaningful participation in shaping LLWB's future.
- Stronger Partnerships — deepening alliances with key stakeholders and expanding opportunities to drive collective impact.
- Advancing Women on Boards — strengthening and growing the Women on Boards initiative to increase women's leadership in decision-making roles.
- Reconnecting Our Global Community — strengthening ties with diaspora members, leveraging their expertise and networks, and creating opportunities for mentorship, collaboration, and knowledge exchange.
- Lasting Impact — reinforcing LLWB's role as a leading voice for women's economic empowerment and workplace equality.

Building on LLWB's strong legacy, I look forward to creating greater opportunities for our members, strengthening partnerships, and expanding our impact in Lebanon and beyond. Together, we can shape the next chapter of women's economic empowerment.

MEET YOUR CANDIDATE

Hasmig Dantziguian Khoury

Sustainability & Governance Leader

Former Member, Economic, Social & Environmental Council

UN Global Compact Network Lebanon Chair

25+ Years in ESG, Governance & Social Impact

LLWB BOARD CANDIDATE 2026



— PROFESSIONAL PROFILE

Advancing Sustainability & Inclusive Growth

A sustainability and governance professional with extensive experience in stakeholder engagement, public policy, and corporate responsibility. Hasmig recently served on Lebanon's Economic, Social and Environmental Council, contributing to national initiatives related to poverty reduction, responsible investment, and sustainable development.

A founding Board Member of UN Global Compact Network Lebanon, she brings expertise in ESG, DEI, women's empowerment, human rights, ethical labor practices, climate action, and sustainability reporting. Educated at McGill University and through executive programs at Harvard Business School and ESA/IFG, she combines strategic leadership with a strong commitment to social impact.

- | | |
|---------------------------|---------------------|
| • Sustainability Strategy | • ESG & SDGs |
| • Corporate Governance | • DEI Leadership |
| • Climate Action | • Human Rights |
| • Stakeholder Engagement | • UN Global Compact |

— VISION FOR LLWB

Empowering Women Through Leadership & Impact

- Mentorship & Leadership — supporting women in building confidence, leadership skills, and purpose throughout their professional journeys.
- Strategic Partnerships — fostering collaboration across sectors to create new opportunities and strengthen women's participation in business.
- Sustainable Growth — advancing responsible business practices that drive long-term economic and social value.
- Inclusive Communities — promoting diversity, equity, and inclusion while amplifying women's voices in decision-making spaces.

"I am honored to bring my experience in leadership, sustainability, governance, and stakeholder engagement to LLWB. Together, we can advance meaningful initiatives, strengthen partnerships, and build a more inclusive and dynamic future for women in business."

MEET YOUR CANDIDATE

Rana Ghandour Salhab

Managing Partner – People & Purpose

Deloitte Middle East

Board Director • Governance Advisor

35+ Years Across Europe & the Middle East



LLWB BOARD CANDIDATE 2026

— PROFESSIONAL PROFILE

LEADING GOVERNANCE, IMPACT & TRANSFORMATION

A senior business leader, governance advisor, and board director with more than 35 years of international experience spanning strategy, organizational transformation, talent leadership, sustainability, and governance across Europe and the Middle East.

As Managing Partner for People & Purpose, Sustainability & Social Impact at Deloitte Middle East, Rana serves on regional and EMEA leadership teams and has worked across more than 50 countries throughout her career. She has held leadership positions across Switzerland, Saudi Arabia, Egypt, the UAE, and Lebanon.

Rana brings extensive board and governance experience, having served on the Deloitte Middle East Board and several governance committees focused on succession planning, leadership development, board nominations, and public policy. She has also served on advisory boards at AUB and LAU and contributed to numerous initiatives advancing women’s leadership and entrepreneurship across the region.

- Governance & Boards
- Leadership Development
- Organizational Transformation
- People & Talent Strategy
- Sustainability & Social Impact
- Regional & Global Partnerships
- Stakeholder Engagement
- Women’s Leadership

— VISION FOR LLWB

STRENGTHENING LEADERSHIP, GOVERNANCE & OPPORTUNITY

- Strategic Growth — supporting LLWB’s long-term vision through strong governance, sustainable growth, and organizational excellence.
- Women in Leadership — creating greater pathways for women leaders, executives, and entrepreneurs to influence decision-making and drive change. Governance Excellence — leveraging board and committee experience to strengthen institutional effectiveness and strategic impact.
- Regional & Global Networks — expanding partnerships and connections that provide members with greater visibility, opportunities, and collaboration.
- Future-Ready Leadership — empowering the next generation of women leaders through mentorship, capability-building, and access to influential networks.

"I am honored to support LLWB's mission and contribute my experience in leadership, governance, transformation, and stakeholder engagement. Together, we can strengthen the League's impact, create greater opportunities for women leaders and entrepreneurs, and continue shaping a more inclusive and influential business community."

MEET YOUR CANDIDATE

Rana El Hindy

Lecturer & Trainer

Environment & Wellbeing



LLWB BOARD CANDIDATE 2026

— PROFESSIONAL PROFILE

INTEGRATING HEALTH, WELLBEING & ENVIRONMENTAL SUSTAINABILITY

Rana El Hindy is a holistic dietitian, lifestyle management expert, certified yoga instructor, university instructor, and environmental advocate dedicated to promoting healthier lives and more sustainable communities.

She holds bachelor's degrees in Agriculture and Food Sciences and in Nutrition and Dietetics, as well as a Master's degree in Environmental Sciences. Drawing on this multidisciplinary foundation, she integrates nutrition, wellness, environmental awareness, and behavior change to support individuals in adopting healthier and more balanced lifestyles.

In 2014, she founded Activerde Lifestyle, an initiative promoting a holistic approach to health by translating scientific knowledge into practical, accessible guidance. Through consultations, workshops, and community programs, she encourages healthy eating habits, active living, and mindful lifestyle choices.

Rana is deeply engaged in community service and environmental action. She is an active member of the Lebanese League for Women in Business (LLWB) and a founding member and former President (2023–2024) of the Rotary Club Lebanon Eco, the first Rotary club in Lebanon dedicated to environmental sustainability. Through her leadership, she has contributed to initiatives in environmental education, waste management, ecological restoration, and community engagement.

She believes strongly in the connection between human health and environmental wellbeing, advocating that caring for the planet is essential to improving quality of life and building more resilient communities.

- Holistic Nutrition & Dietetics
- Lifestyle Management & Behaviour Change
- Yoga & Mindfulness Instruction
- Environmental Sustainability & Advocacy
- Strategic Partnerships
- Education & Academic Instruction
- Social Entrepreneurship
- Community Engagement & Development

— VISION FOR LLWB

WELLBEING • SUSTAINABILITY • EMPOWERMENT

- Women's Empowerment & Growth — supporting women to build confidence, skills, and leadership capacity across all sectors.
- Wellbeing & Balanced Living — integrating physical, mental, and lifestyle wellbeing into women's personal and professional development.
- Sustainability & Environmental Awareness — promoting eco-conscious practices and strengthening the link between wellbeing and environmental responsibility.
- Education & Knowledge Sharing — expanding access to practical learning, training, and capacity-building opportunities for women.
- Community Impact & Collaboration — fostering stronger networks that enable women to create meaningful, collective change.

"I am committed to empowering women, strengthening professional networks, and advancing sustainable and healthy living. Through my experience in education, wellness, and environmental leadership, I aim to contribute to LLWB's mission by fostering collaboration, creating meaningful impact, and supporting initiatives that help women and communities thrive."

MEET YOUR CANDIDATE

Zakie Karam

CEO – Software Solutions & Consulting Company

Co-Founder & General Manager, DON TELECOM (since 2011)

Board Member & Treasurer – Lebanese League for Women in Business (LLWB)

President – Internet Society Lebanon Chapter

Board Member – Fabric Aid

Member – Ardi Ardak

Angel Investor – IM Capital (2 consecutive years)

Mentor – Confideo Lebanon Venture Mentoring (MIT-based VMS model)



LLWB BOARD CANDIDATE 2026

— PROFESSIONAL PROFILE

LEADERSHIP IN TECHNOLOGY, TELECOM & BUSINESS GROWTH

A senior business leader and entrepreneur with over 30 years of experience in software solutions, telecommunications, consulting, and business development across the region.

Co-founder and General Manager of DON TELECOM since 2011, with a strong track record in scaling businesses and driving sustainable growth. Throughout her career, she has consistently delivered up to 40% annual revenue growth across multiple organizations, reflecting a strong focus on performance, execution, and strategic development.

Her expertise and results-driven leadership have attracted international organizations and companies—from SMEs to large corporations—seeking her mentorship and consultancy in business growth, transformation, and operational excellence.

She holds a Computer Science background and an MBA from ESCP Europe (ESCP-EAP Paris), combining technical expertise with strong strategic and managerial capabilities.

She is a certified Corporate Director by the International Finance Corporation (IFC) and a certified Business Angel and Deal Leader, reinforcing her governance and investment expertise.

- Business Development & Growth Strategy
- Software Solutions & Consulting
- Telecommunications & ICT
- Mentorship & Entrepreneurship Support
- Stakeholder Engagement & Partnerships
- Governance & Board Leadership
- Investment & Angel Funding
- Organizational Performance & Scaling

— VISION FOR LLWB

STRONGER GOVERNANCE • GREATER IMPACT • SUSTAINABLE GROWTH

- Strong Governance & Financial Oversight — ensuring accountability, transparency, and sustainability within LLWB's operations
- Women's Economic Participation — expanding opportunities for women in leadership, entrepreneurship, and decision-making roles
- Strategic Growth & Partnerships — strengthening LLWB's regional and international collaborations
- Member Engagement & Impact Delivery — enhancing value for members through structured, measurable initiatives
- Mentorship & Capacity Building — supporting the next generation of women leaders and entrepreneurs

"I am seeking re-election to the LLWB Executive Board because I remain committed to advancing women's economic participation, stronger governance, and the Association's long-term sustainability. As a current Board member and Treasurer, I bring continuity, institutional knowledge, and hands-on experience in financial oversight, strategy, fundraising, partnerships, and organizational development. My background in business consulting, ICT, entrepreneurship, and board governance enables me to contribute practical judgement, accountability, and strong stakeholder relations. I also bring a broad professional network and a collaborative approach focused on measurable impact, member engagement, and effective implementation of LLWB's priorities."

MEET YOUR CANDIDATE

Wael Kechli

Business Professional | Educator | Entrepreneur | Consultant

Business • Technology • Consumer Electronics



LLWB BOARD CANDIDATE 2026

— PROFESSIONAL PROFILE

BUSINESS LEADERSHIP, EDUCATION & DIGITAL INNOVATION

Wael Kechli is a business professional, educator, entrepreneur, researcher, and business consultant with professional activities spanning Canada and Lebanon.

He studied at the University of Liverpool, Harvard Business School, and IE University, and has built a multidisciplinary career combining business leadership, academic teaching, and strategic consulting.

He teaches at several higher education institutions in Canada and Lebanon, contributing to the fields of business, management, entrepreneurship, and innovation. Alongside his academic role, he manages two businesses in the consumer electronics sector—one based in Canada and the other in Lebanon.

In addition to his entrepreneurial and academic work, he is engaged in consulting initiatives focused on the strategic adoption of artificial intelligence. He works with organizations supporting NGOs in integrating AI into their operations to improve impact, efficiency, and decision-making, and also advises companies on digital transformation and AI-driven business strategy.

His work bridges academic expertise, business leadership, and emerging technology, with a strong focus on entrepreneurship, organizational development, sustainability, and innovation.

- Academic Teaching & Higher Education
- Artificial Intelligence Strategy & Adoption
- Consumer Electronics Industry
- Entrepreneurship & Business Development
- NGO Capacity Building & Impact Strategy
- Organizational Development
- Digital Transformation & Innovation
- Strategic Consulting

— VISION FOR LLWB

INNOVATION • YOUTH EMPOWERMENT • FUTURE-READY LEADERSHIP

- Youth & Next-Generation Empowerment — creating structured pathways for young girls and women to explore entrepreneurship, leadership, and innovation.
- Innovation & Technology Adoption — integrating artificial intelligence, digital tools, and innovation into LLWB programs to enhance impact and relevance.
- Entrepreneurship Development — supporting women entrepreneurs with practical tools, mentorship, and access to business networks.
- Capacity Building & Skills Development — expanding training programs focused on future skills, digital literacy, and business readiness.
- Strategic Partnerships & Global Exposure — strengthening collaborations with academic institutions, tech ecosystems, and international organizations to increase opportunities for members.

“I am committed to empowering the next generation of women leaders and entrepreneurs by fostering access to education, mentorship, and innovation. Through initiatives like Girlpreneur, I aim to help young women explore entrepreneurship and technology, build confidence, and connect with inspiring role models who can support their growth and success.”